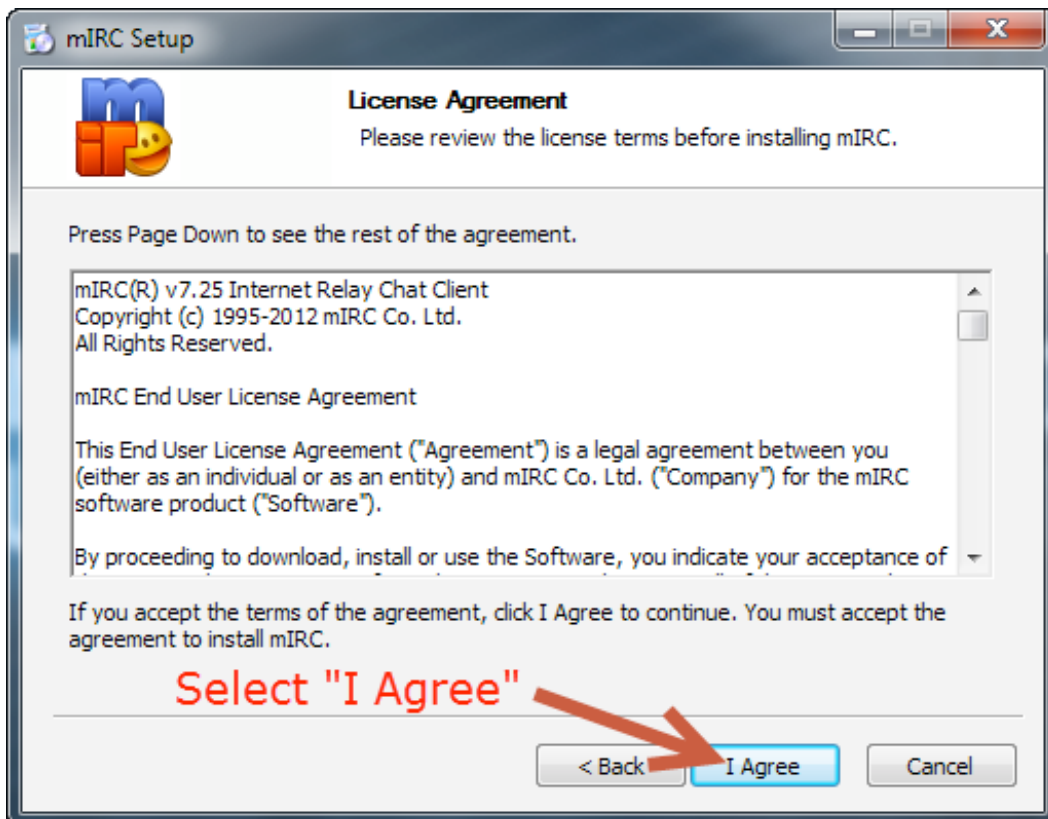
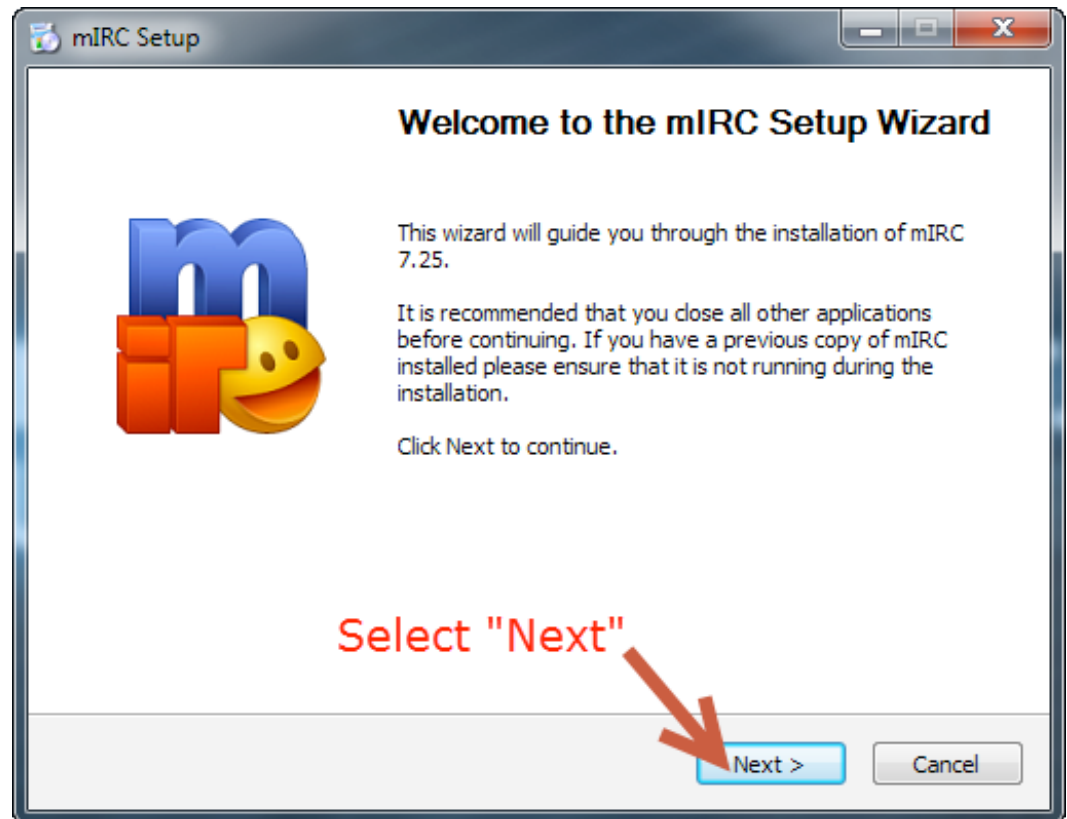


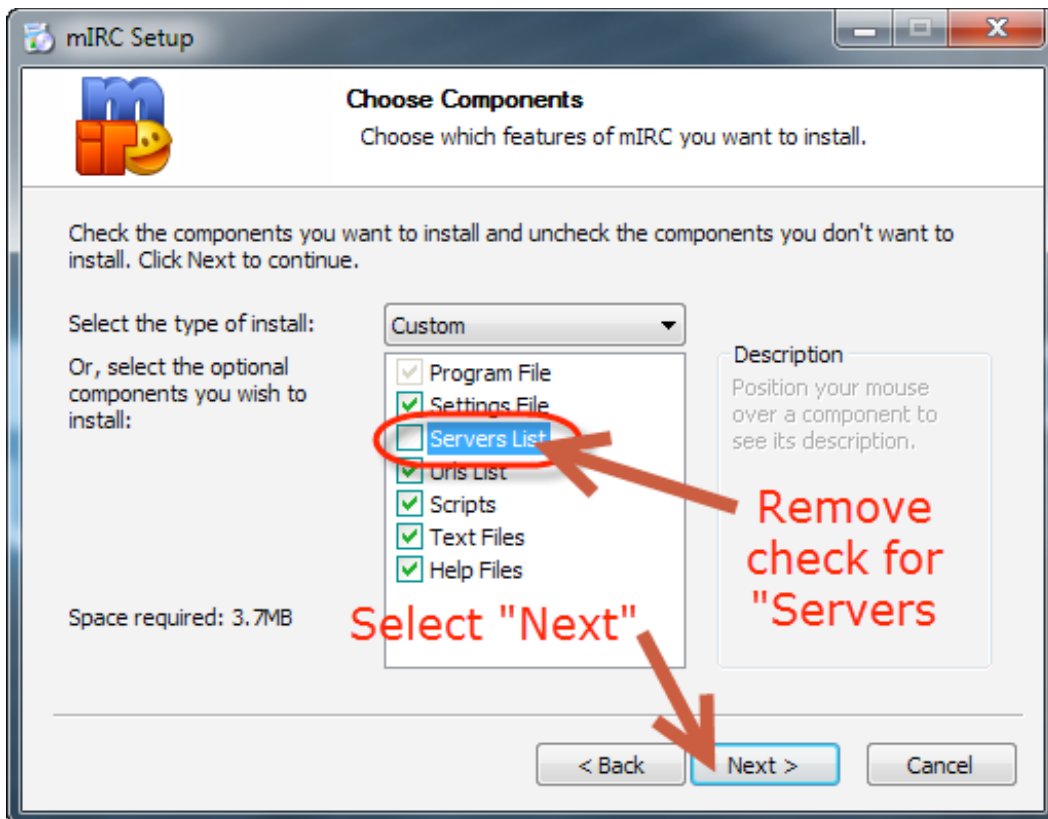
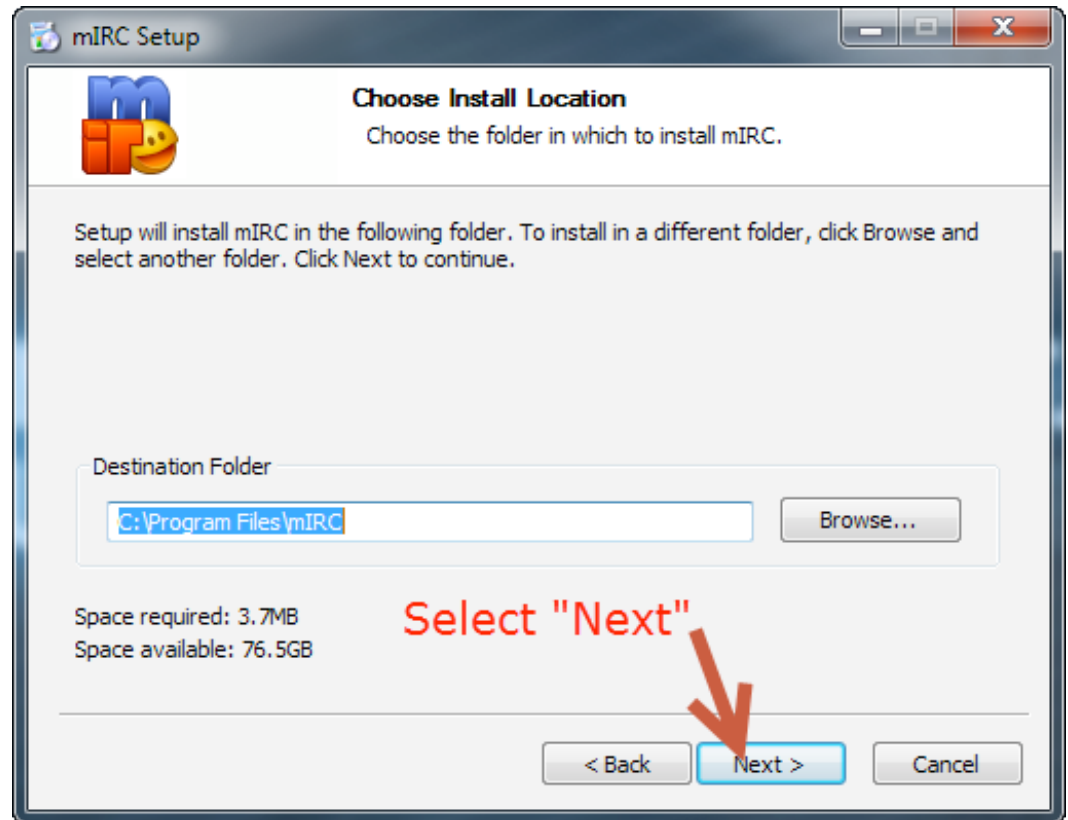
QuickStart Guide - mIRC (Windows)

Recommended IRC Client for Windows PC

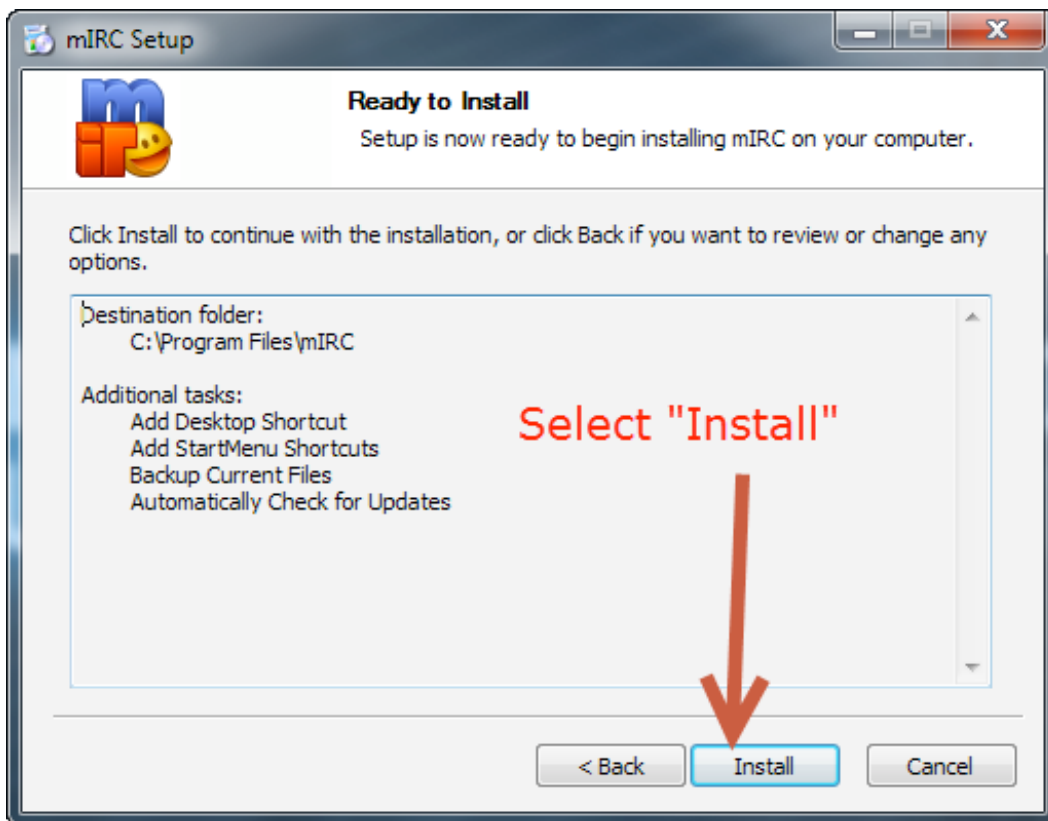
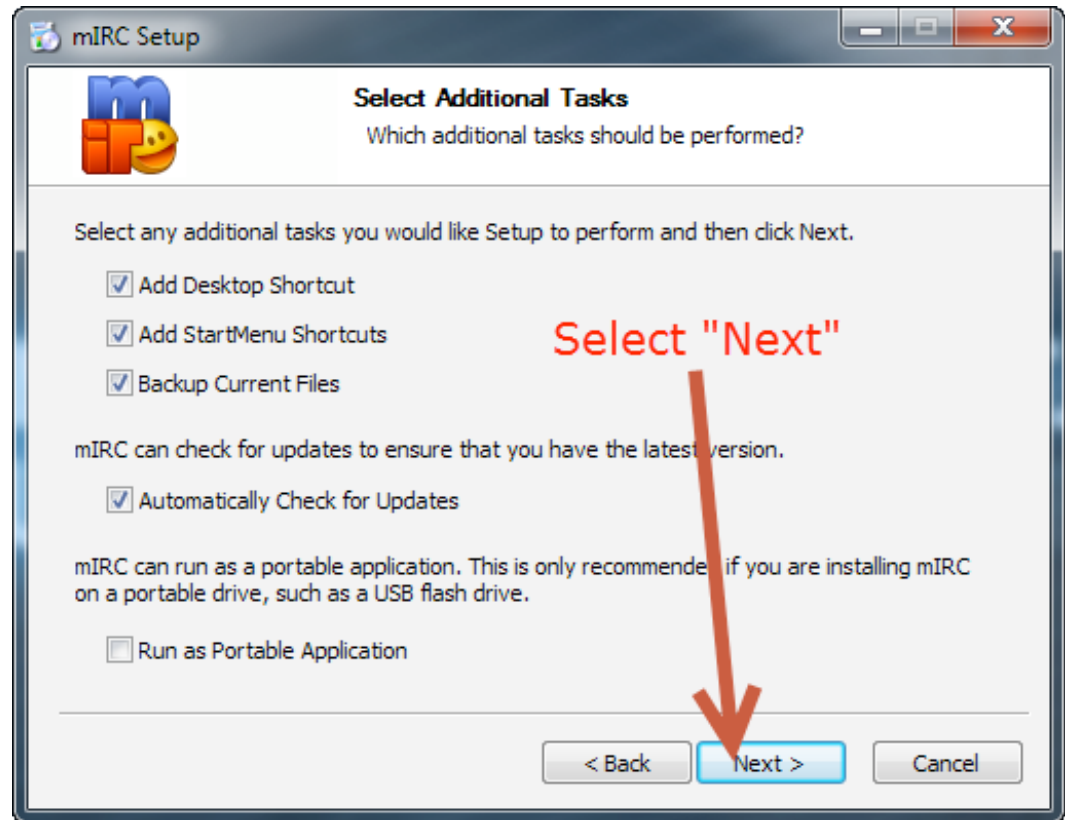
Download from
www.mirc.com and
then “Double click on
the installer”



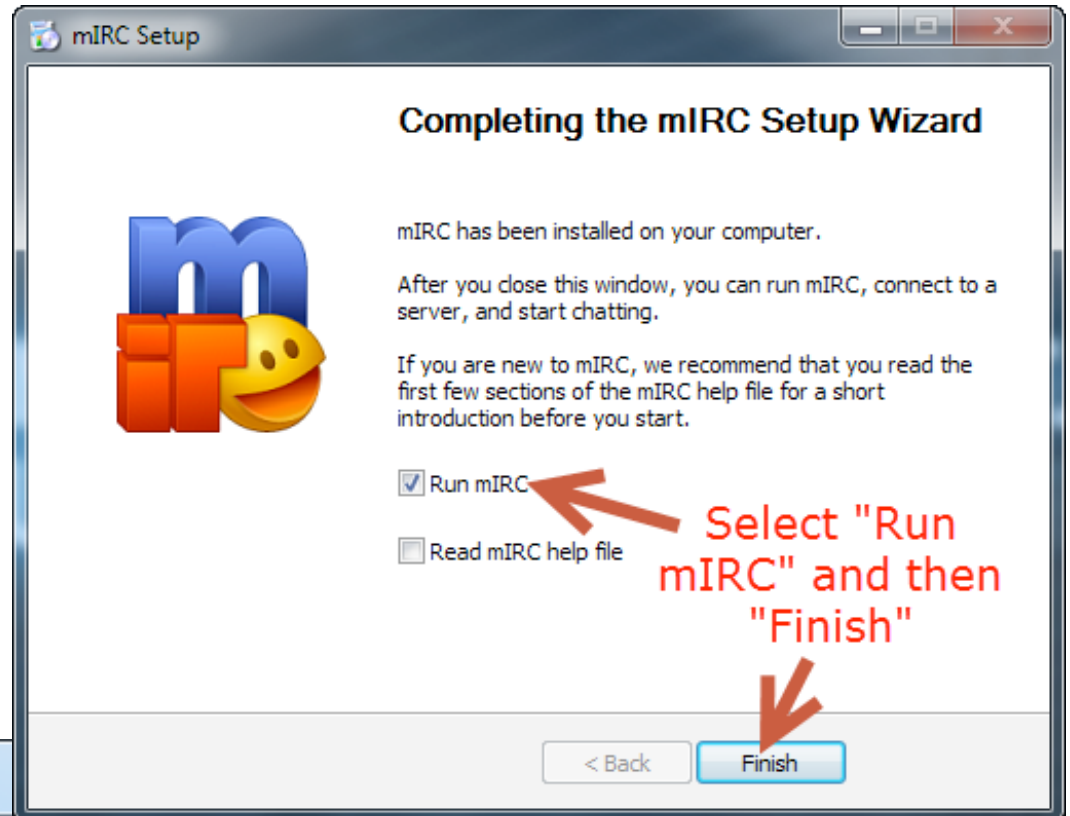
QuickStart Guide - mIRC (Windows)



QuickStart Guide - mIRC (Windows)

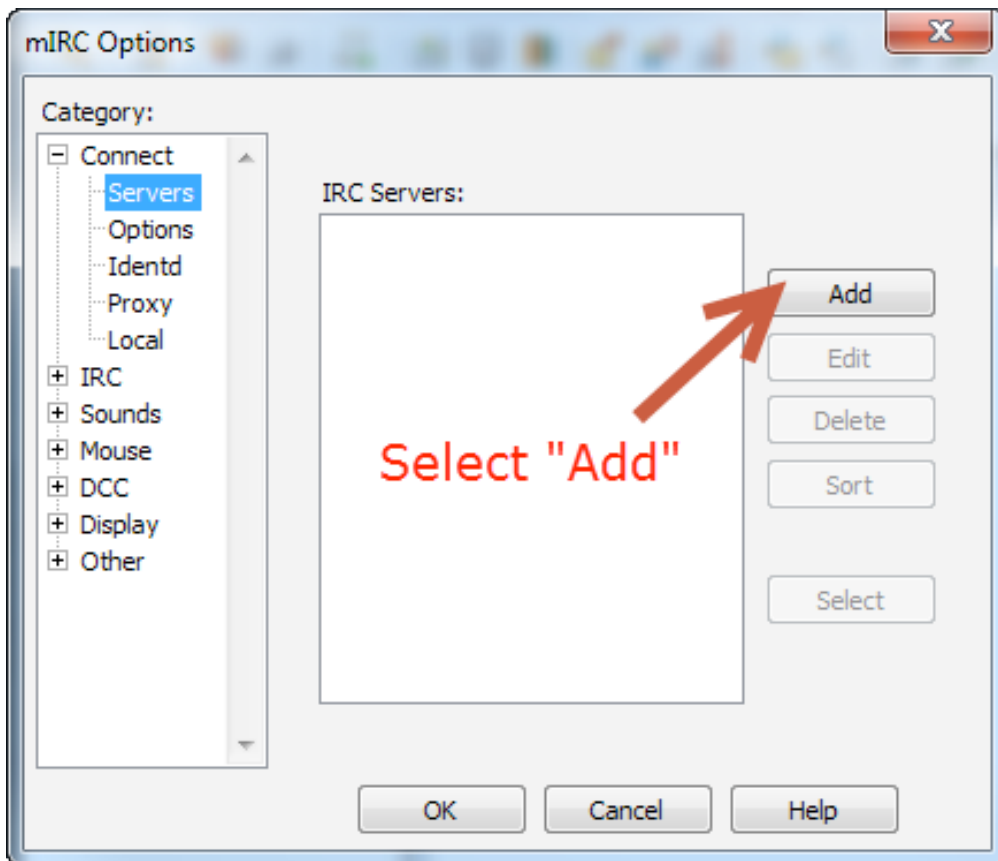
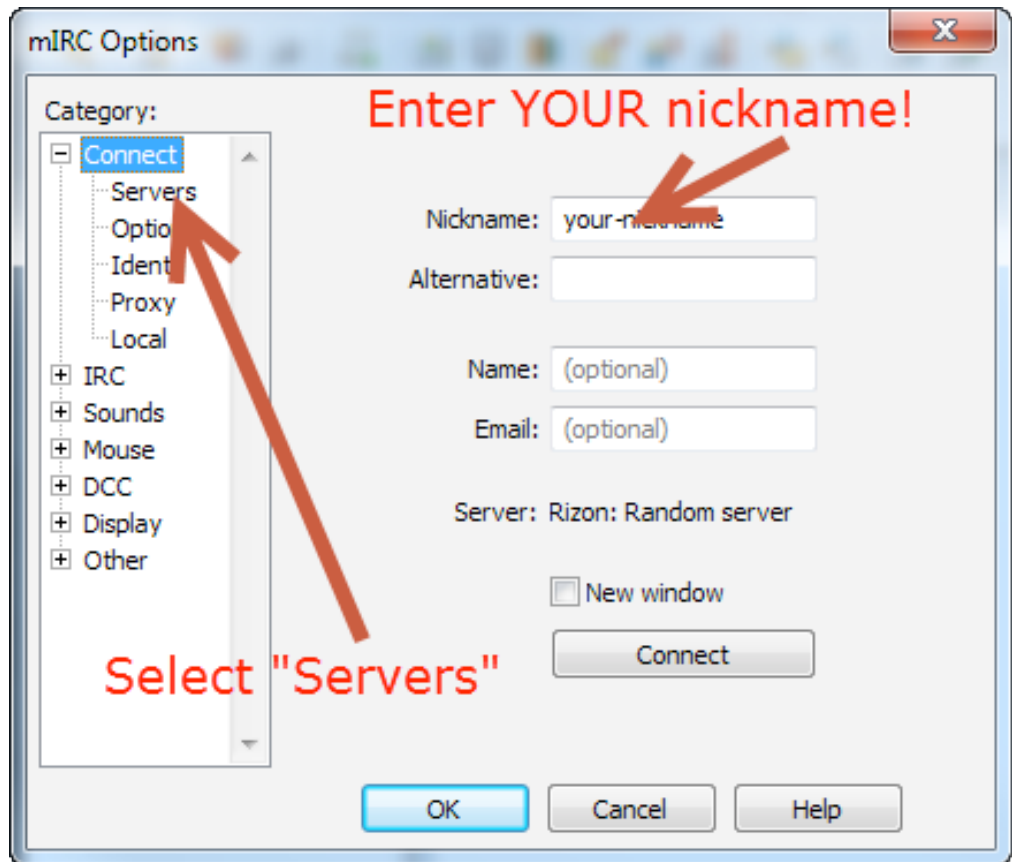


QuickStart Guide - mIRC (Windows)



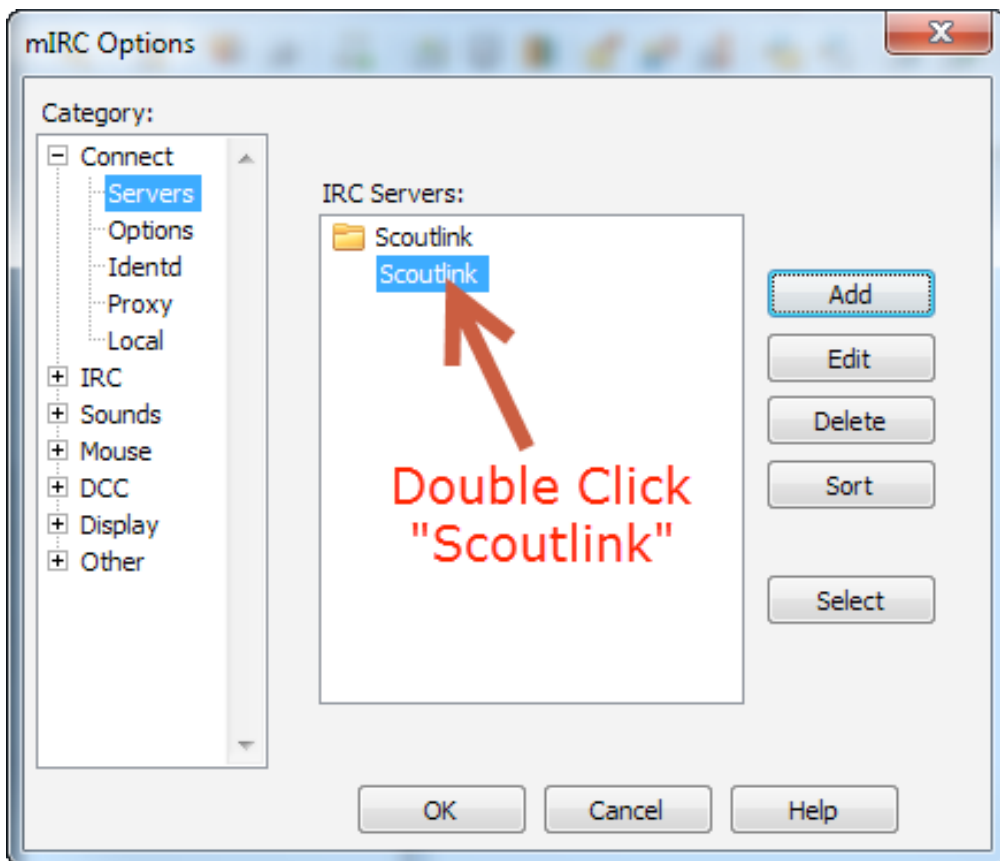
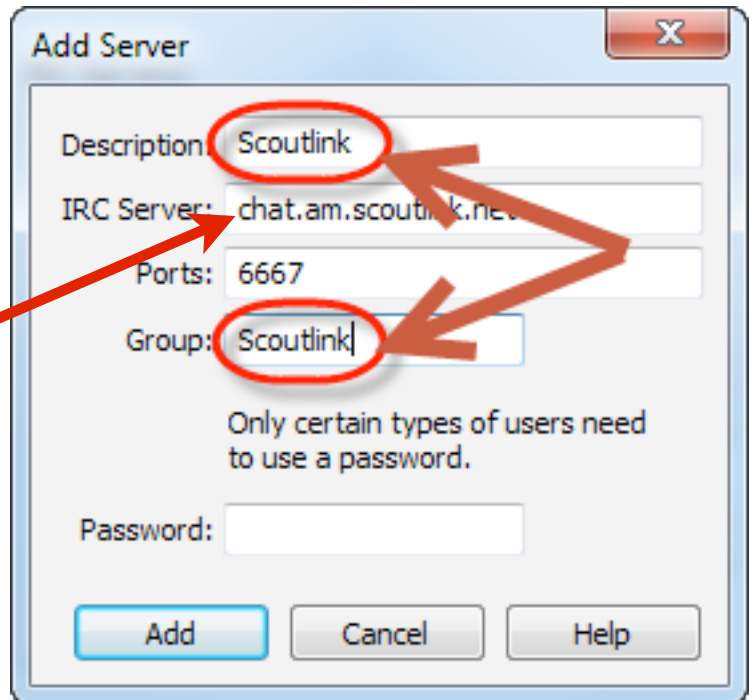
QuickStart Guide - mIRC (Windows)

Note: Change nickname to use YOUR nickname assigned when you registered for JOTI...

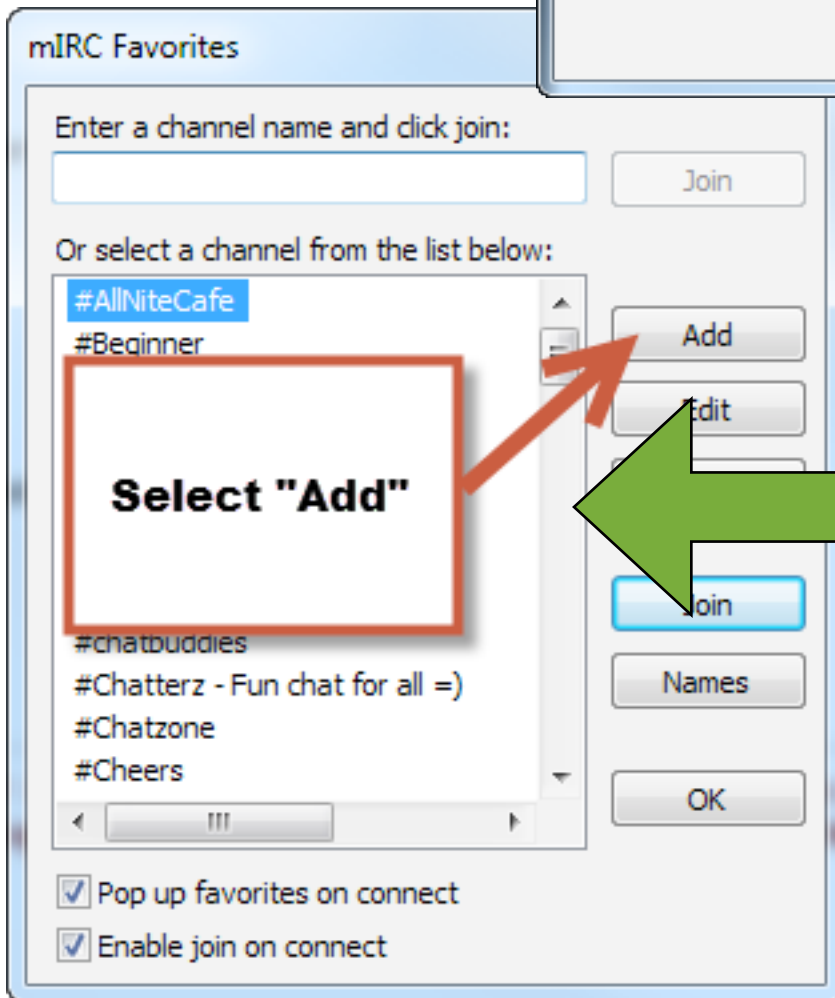
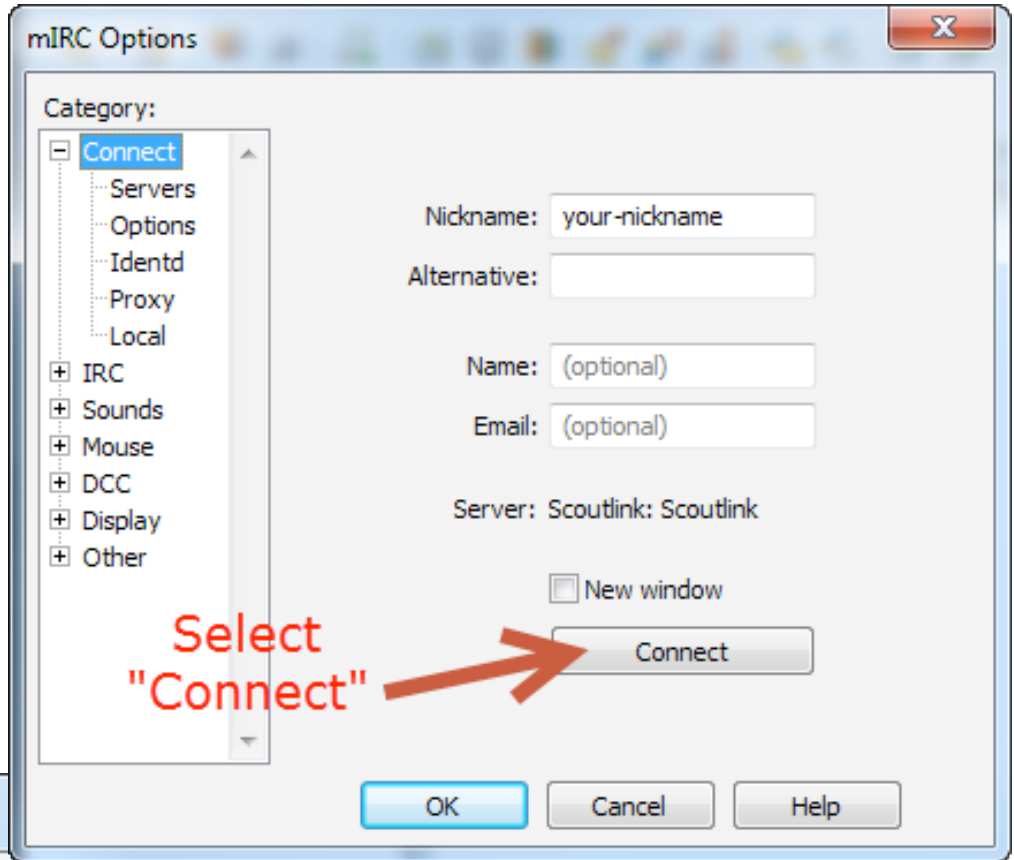


QuickStart Guide - mIRC (Windows)

Note: chat.am.scoutlink.net is the IRC server we will use for JOTI in the USA



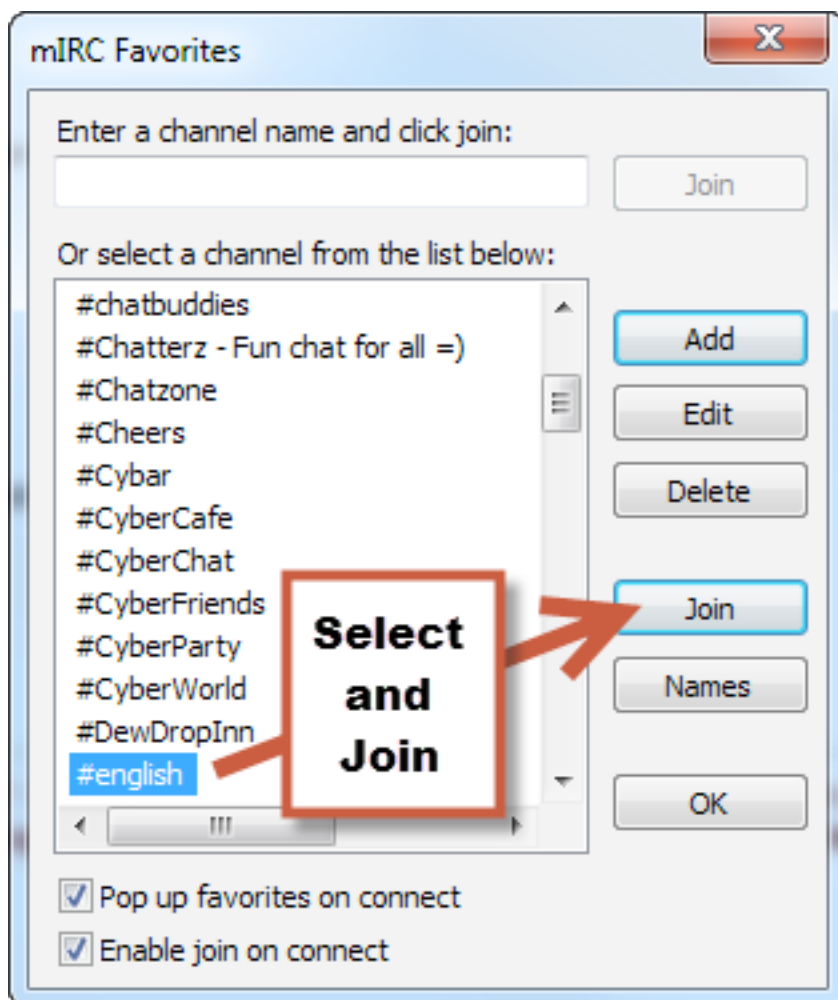
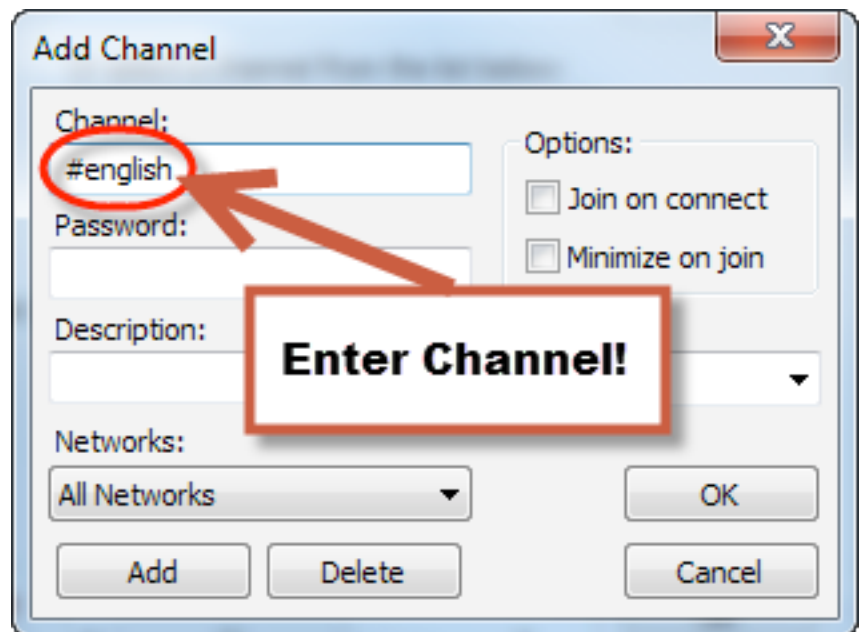
QuickStart Guide - mIRC (Windows)



**You are now
connected to the
Scoutlink IRC
network!**

**All that is left is to add
and then join a
channel!**

QuickStart Guide - mIRC (Windows)



QuickStart Guide - mIRC (Windows)

You are now connected to the Scoutlink IRC network and have joined the #english channel, ready to chat!

